

PRIME DAILY

July 10, 2025



Nvidia Leads The Market Higher

Nvidia helped fuel a tech rally that saw the AI darling jump by 1.8 per cent and become the first public company to reach a market capitalisation of \$4 trillion.

Equity markets closed higher on Wednesday, following President Trump's announcement of new tariffs on seven countries. To date, President Trump has announced new tariffs on 21 countries this week, with tariff rates ranging from 20% to 40%. Trump was particularly harsh on Brazil, imposing a 50% duty on goods from Brazil.

The strength on Wall Street may partly reflect optimism about a potential trade agreement between the U.S. and the European Union. A news report indicated EU negotiators are closing in on a trade deal with the U.S. that would cement higher tariffs than those granted to the U.K.

Asian stocks rose slightly on Thursday, buoyed by optimism following Nvidia's brief surge to a world-record \$4 trillion valuation, as investors largely shrugged off U.S. President Donald Trump's latest tariff announcements.

U.S. copper futures widened their premium to the London benchmark overnight as U.S. President Donald Trump ramped up his global tariff assault on Wednesday, announcing a new 50% tariff on U.S. copper imports, which will take effect on August 1.

The Federal Reserve released the minutes of its June monetary policy meeting, which revealed most participants generally agree the central bank is well-positioned to wait for more clarity on the outlook for inflation and the economy before adjusting interest rates.

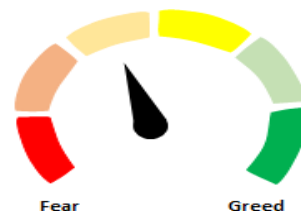
The Fed's "wait and see" approach comes as participants said economic growth and the labour market remain solid and described monetary policy as moderately or modestly restrictive.

Back home, Nifty fell sharply in the last hour of trade yesterday, signalling profit booking. The session finally settled with a loss of 46 points (0.18%), closing at 25,476.

An attempt by the Nifty to surpass the previous session's high failed, with the index turning southward after making a double top at 25,548. However, the Nifty managed to hold its level above the previous session's low, indicating an ongoing consolidation within its primary uptrend. Support and resistance levels for the Nifty remain at 25,331 and 25,670, respectively. A decisive breakout from this range would give a directional view in the index.

Any progress in finalising trade agreements over the coming weeks and months should reduce uncertainty, while any flexibility in lowering tariffs should help contain inflation and growth concerns.

Indian markets are poised to open subdued, but are likely to witness higher volatility as the session progresses to negotiate weekly derivatives expiry and position ahead of a slew of quarterly results, starting with Tata Elxsi and TCS.



Global Equity Indices

	Close	Abs. Change	% Change
Indian Indices			
Sensex	83,536	-176.4 ▼	-0.21%
Nifty	25,476	-46.4 ▼	-0.18%
Midcap	59,340	-75.8 ▼	-0.13%
Small cap	19,007	112.2 ▲	0.59%
US Indices			
Dow Jones	44,458	217.5 ▲	0.49%
S&P 500	6,263	37.7 ▲	0.61%
Nasdaq	20,611	192.9 ▲	0.94%
European Indices			
FTSE	8,867	12.8 ▲	0.15%
DAX	24,550	342.7 ▲	1.42%
CAC	7,878	111.8 ▲	1.44%
Asian Indices			
Shanghai	3,502	4.7 ▲	0.13%
Hang Seng	23,902	-246.0 ▼	-1.02%
Nikkei	39,611	-78.2 ▼	-0.20%

Indices Futures

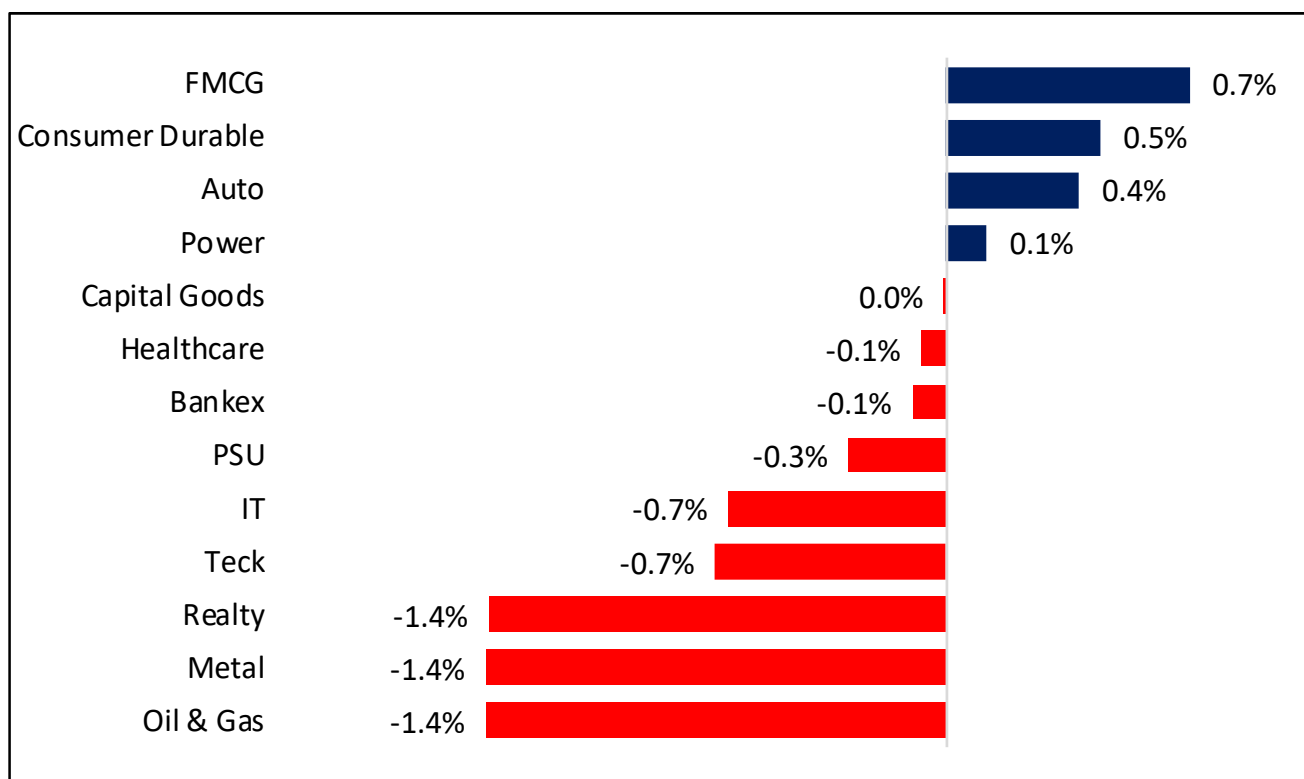
	Close	Abs. Change	% Change
IFSC Nifty			
IFSC Nifty	25,547	-27.5 ▼	-0.11%
US Indices			
Dow Jones	44,646	-73.0 ▼	-0.16%
S&P 500	6,297	-10.0 ▼	-0.16%
Nasdaq	23,015	-38.0 ▼	-0.16%
European Indices			
FTSE	8,916	37.0 ▲	0.42%
DAX	24,709	77.0 ▲	0.31%
Asian Indices			
Shanghai	3,961	3.8 ▲	0.10%
Hang Seng	23,901	19.0 ▲	0.08%
Nikkei	39,630	-170.0 ▼	-0.43%

Nifty50 Index Contributors

Top Five (Positive Contributors)		
Stock	Points	% Change
HDFCBANK	16.5	0.06
BAJFINANCE	7.6	0.03
HINDUNILVR	6.0	0.02
ITC	4.6	0.02
SHRIRAMFIN	3.7	0.01

Bottom Five (Negative Contributors)		
Stock	Points	% Change
RELIANCE	-27.8	-0.11
ICICIBANK	-15.9	-0.06
HCLTECH	-8.0	-0.03
LT	-6.9	-0.03
BHARTIARTL	-6.2	-0.02

BSE Sectoral Leaders & Laggards

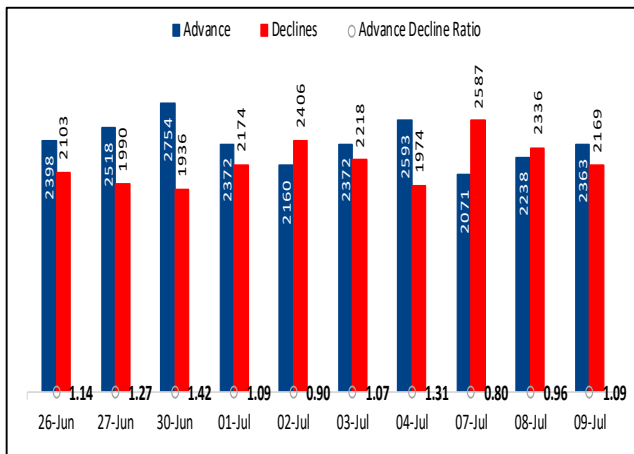


Nifty50 Index Top Pops & Drops

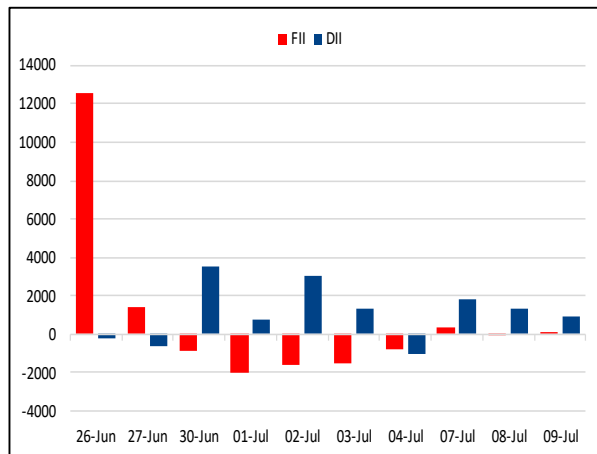
Nifty50 Top Five Gainers			
Symbol	LTP	% Change	Volume
SHRIRAMFIN	681.1	1.81	3,560,120
BAJFINANCE	940.6	1.40	5,341,529
HINDUNILVR	2,423.4	1.28	1,741,690
COALINDIA	387.5	1.20	4,497,121
ULTRACEMCO	12,562.0	0.94	379,924

Nifty50 Top Five Losers			
Symbol	LTP	% Change	Volume
HCLTECH	1,674.0	-2.00	2,894,808
TATASTEEL	159.0	-1.83	29,839,077
HINDALCO	674.0	-1.70	6,703,774
APOLLOHOSP	7,469.0	-1.27	266,815
TECHM	1,614.8	-1.26	1,173,847

BSE Advance & Declines



Institutional Activities



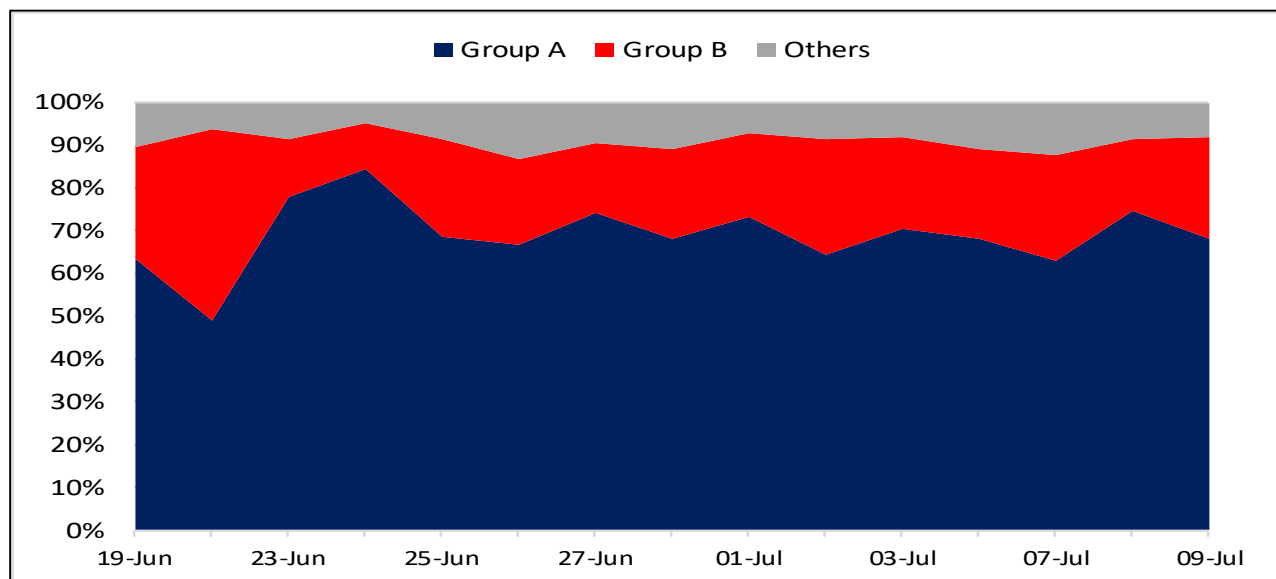
52 Week High Stocks

	9-Jul-25	8-Jul-25
BSE Universe	166	177
BSE Group A Stocks Hitting 52 Week High		
Stocks	Price	52 Week High
SYRMA	649.2	663.6
MEDANTA	1278.7	1329.0
KIMS	707.2	713.0
INDIASHLTR	938.1	944.2
SAMHI	237.0	240.4




52 Week Low Stocks

	9-Jul-25	8-Jul-25
BSE Universe	51	66
BSE Group A Stocks Hitting 52 Week Low		
Stocks	Price	52 Week Low
OLAELEC	40.4	40.2
PROTEAN	816.1	812.3
SPICEJET	38.2	38.0

BSE Cash Market Turnover Participant-wise



News Highly Sensitive to Stock Price

Impact	Stock	News
	Enviro Infra (EIEL)	Company for the purpose of joint bidding and execution of a project has entered into a JV agreement with AltoraPro Infrastructure Private Limited in the name and style of Enviro Infra Engineers Limited AIEPL JV, wherein the Company is a lead member. It has won a Rs 395.5 crore (excluding taxes) JV order for pollution control CETP project from Maharashtra Industrial Development Corporation. It is to be executed over the next 24 months.
	Emcure Pharma	United States Food and Drug Administration (US FDA) had conducted Pre-Approval Inspection (PAI) of Company's manufacturing facility (Oncology) at G.I.D.C., Taluka - Sanand, Ahmedabad-382110, Gujarat, from June 30, 2025 to July 08, 2025. The inspection concluded without issuance of Form 483 (zero observations).
	Oil India and GAIL	<p>Oil India Limited (OIL) and GAIL (India) Limited, two leading Maharatna CPSEs have signed the agreement for extending the existing Gas Sale and Purchase Agreement for another 15-years, starting from 1st July 2025, to supply up to 900,000 Standard Cubic Meters per Day (SCMD) of natural gas from OIL's Rajasthan Gas Fields.</p> <p>The sourced gas will be supplied to State run power plant M/s Rajasthan Rajya Vidyut Utpadan Nigam Limited (RRVUNL) for production of power.</p>

Stock	News
Indian Oil Corporation	IndianOil-Adani Gas Pvt. is planning to raise Rs 1,378 crore (\$161 million) from the sale of convertible bonds. The company, a joint venture plans to raise the money in four tranches via compulsorily convertible debentures that will be converted into equity on a specified date.
Bharti Airtel	Bharti Airtel and Ericsson have deepened their long-standing relationship with a new agreement to support Bharti Airtel's rollout of Fixed Wireless Access (FWA) services in India with its core network portfolio. The deployment will enhance Airtel core capability and capacity for Fixed Wireless Access, thereby elevating the customer experience for Airtel FWA users.
TCS Q1FY26 result preview	<p>In rupee terms, TCS Ltd is likely to report 0.7% QoQ and 3.7% YoY revenue growth to Rs 64,935 crore. In US\$ terms, revenue could rise by 1.7% QoQ and 1.1% YoY to US\$7,586 mn in Q1FY26. Net profit could increase by 1.1% QoQ and 2.6% YoY to Rs 12,354 crore in Q1FY26. EBIT margin could increase by 10 bps QoQ and decrease by 40 YoY to 24.3%.</p> <p>The management commentary on demand environment in in the US and Europe region, updates on BFSI, Technology & Services verticals, TCV (Total Contract Value) include AI, data analytics, and digital innovation, status of BSNL deal, margins outlook, and update on wage hike cycle likely to watch out for.</p>
GR Infra	GR Varanasi Kolkata Highway Private Limited, a wholly owned subsidiary of the Company has received a letter from National Highways Authority of India (NHAI) declaring appointed date w.e.f. 01st July 2025 for the project "Construction of 6-lane Greenfield Varanasi-Ranchi-Kolkata Highway under Bharatmala Pariyojana in the state of Bihar on Hybrid Annuity Mode (Package-7)". Contract price is Rs. 1248 crore.
NIIT Learning Systems	NIIT Learning Systems Limited, a global leader in managed learning services, has completed the acquisition of Munich, Germany-based MST Group, a leader in managed learning services in the DACH region (Germany, Austria, Switzerland). The company was acquired through NIIT MTS' wholly owned subsidiary NIIT (Ireland) Limited for Euro 22.37 million, subject to certain adjustments as per the terms of the definitive agreements. Consolidated revenue as per German GAAP for the financial year ended December 31, 2024 was Euro 17.43 million.

Stock	News
Quality Power and Yash Highvoltage	<p>Quality Power Electrical Equipments and Yash Highvoltage have jointly announced the signing of a Binding Term Sheet to acquire 100% stake in Sukrut Electric Company (SECPL), a Pune-based transformer component manufacturer with a legacy spanning over six decades.</p> <p>The transaction is expected to close over the next two quarters, subject to completion of customary regulatory and commercial formalities.</p>
RailTel Corp	<p>RailTel Corp has secured a Rs 17.47 crore contract from the Chhattisgarh government, marking its third major win this month. With this, RailTel's total order value for July 2025 reaches Rs 130.32 crore.</p>
Ambuja Cements	<p>The company announced that its subsidiary, ACC Limited, has successfully commissioned a 1.5 million tonnes per annum (MTPA) brownfield grinding unit at its Sindri plant in Jharkhand. This strategic expansion boosts Ambuja Cements' total installed cement capacity to 104.45 MTPA, reinforcing its position in India's infrastructure sector.</p>
Waaree Energies	<p>The company's subsidiary, Indosolar Limited, has launched an Offer for Sale (OFS) of up to 10 lakh equity shares, representing 2.4% of its paid-up capital. The OFS will open for non-retail investors on July 10, 2025, and for retail investors on July 11 via the stock exchange route.</p>
LIC India	<p>The Indian government has approved an Offer for Sale in LIC as part of its FY26 disinvestment push. With a 96.5% stake in the insurer, even a 1% sale could raise around Rs 6,000 crore, given LIC's Rs 5.98 lakh crore market cap.</p>
Lupin	<p>Lupin Limited and Zentiva Group have entered into a license and supply agreement for commercialization of Lupin's biosimilar Certolizumab Pegol, across multiple markets globally. Lupin will be responsible for the development, manufacturing and supply of the product within the agreed territories. Zentiva will oversee commercialization activities outside USA and Canada, predominantly in Europe and CIS markets, where it will leverage its extensive European commercial infrastructure and regulatory expertise. Lupin will undertake commercialization in the remaining regions, including USA and Canada. Both parties will invest in the development of the new biosimilar. Lupin will receive an initial payment of US\$ 10 million upon execution of the agreement and total development and regulatory milestone payments up to US\$ 50 million. The profits from the defined markets will be shared between the two companies.</p>

Stock	News
Tata Technologies	Tata Technologies and Emerson, an industrial technology leader of advanced automation solutions, today jointly announced a strategic partnership to innovate integrated testing and validation solutions for global OEMs in the automotive, aerospace and commercial vehicle sectors.
Titagarh Rail	Company will issue 21.16 lakh warrants at Rs 945 to promoter group. It would raise Rs 200 crore through the said allotment. An amount equivalent to 25% of the consideration of the Warrants shall be payable at the time of application and the balance 75% of the total consideration shall be payable at the time of conversion of the warrants into Equity Shares.

Key Events

China Inflation Turns Positive; PPI Continues To Fall

China's consumer prices rose for the first time in five months in June but it remained weak and producer prices marked its 33rd straight month of decline, adding pressure on policymakers to introduce more measures to boost demand and support economy. The consumer price index logged an unexpected annual growth of 0.1 percent in June, offsetting a fall of 0.1 percent in May, the National Bureau of Statistics reported Wednesday. Prices were expected to fall again by 0.1 percent. With a marginal increase in June, headline inflation ended a four-month streak of deflation, while Beijing aims to achieve inflation at "around 2 percent" for 2025.

Bank of France estimates Q2 French economic growth of around 0.1%

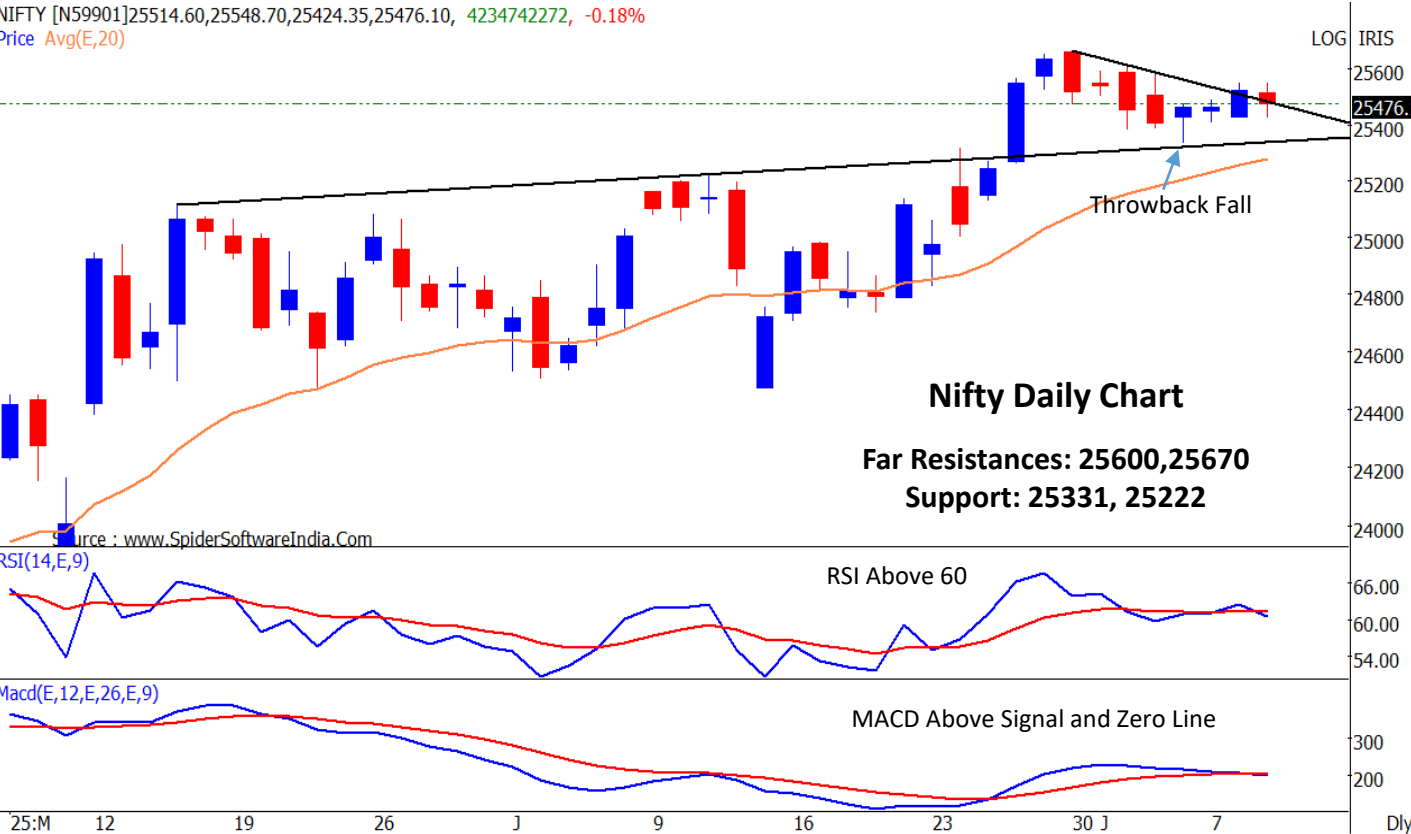
The French economy grew by around 0.1% in the second quarter, the Bank of France said in its monthly economic outlook on Wednesday, adding that uncertainty over U.S. trade tariffs continued to weigh on businesses. The central bank's survey of about 8,500 companies showed a pick-up in business in the industrial and services sectors, although other areas such as the wine sector were more negatively impacted by the tariff uncertainty. "Our estimates suggest a slight rise of around 0.1% in GDP in the second quarter," the Bank of France said.

Wholesale inventories meet forecast with a 0.3% drop, shows bearish outlook for USD

The latest data on wholesale inventories has been released, revealing a decrease of 0.3%. This figure aligns with the forecasted drop, suggesting a bearish outlook for the US Dollar (USD). Wholesale inventories measure the change in the total value of goods held in inventory by wholesalers. A higher than expected reading is typically seen as negative for the USD, while a lower than expected reading is considered positive. In this case, the actual figure matched the forecasted -0.3%, which indicates a potential negative impact on the USD.

Nifty : Consolidation Within An Uptrend; Double Top Resistance at 25549

NIFTY [N59901]25514.60,25548.70,25424.35,25476.10, 4234742272, -0.18%
 Price Avg(E,20)

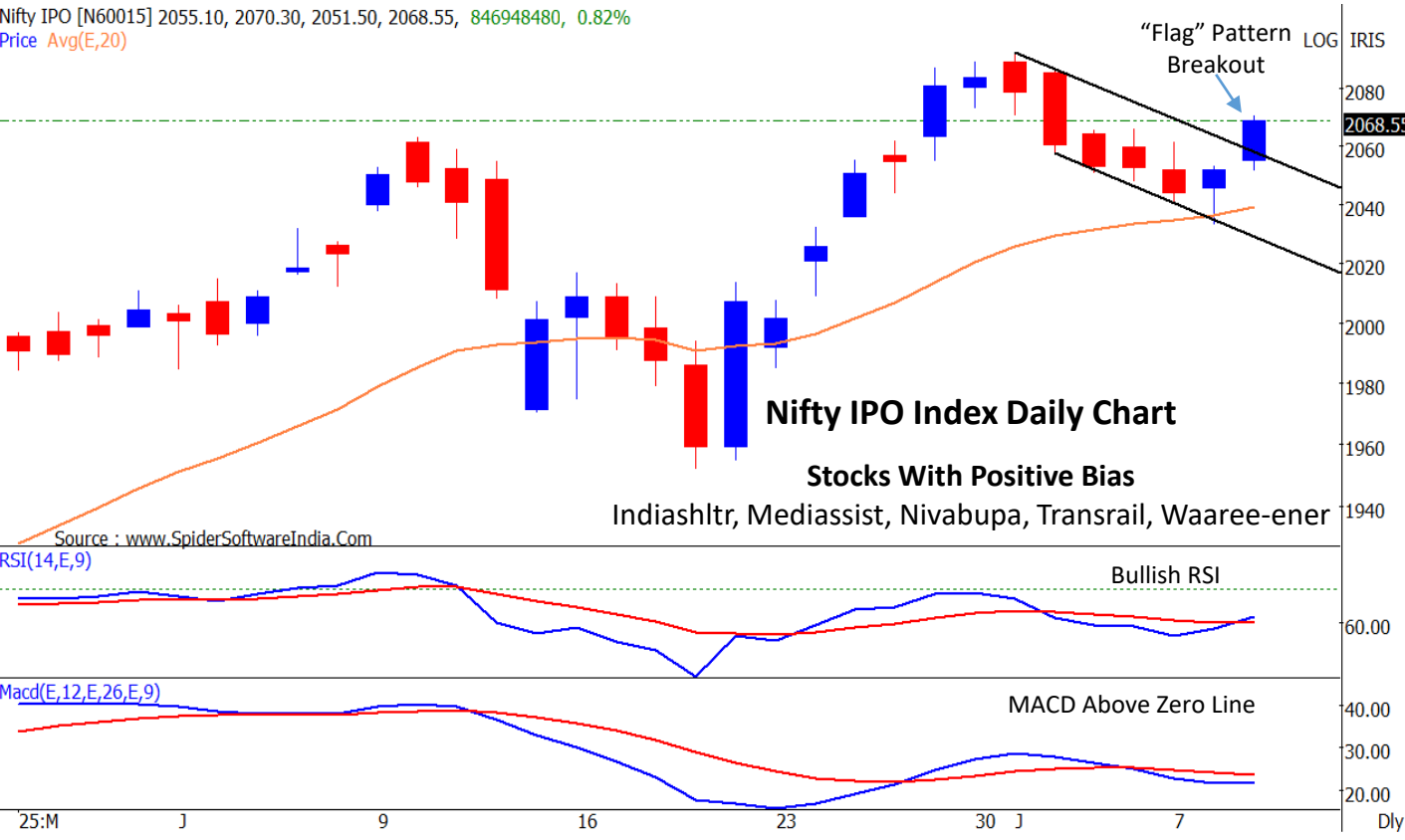


Nifty Daily Chart

Far Resistances: 25600,25670
 Support: 25331, 25222

Nifty IPO : "Flag" Pattern Breakout Indicates Continuation Of An Uptrend

Nifty IPO [N60015] 2055.10, 2070.30, 2051.50, 2068.55, 846948480, 0.82%
 Price Avg(E,20)



Nifty IPO Index Daily Chart

Stocks With Positive Bias
 Indiashltr, Mediassist, Nivabupa, Transrail, Waaree-ener

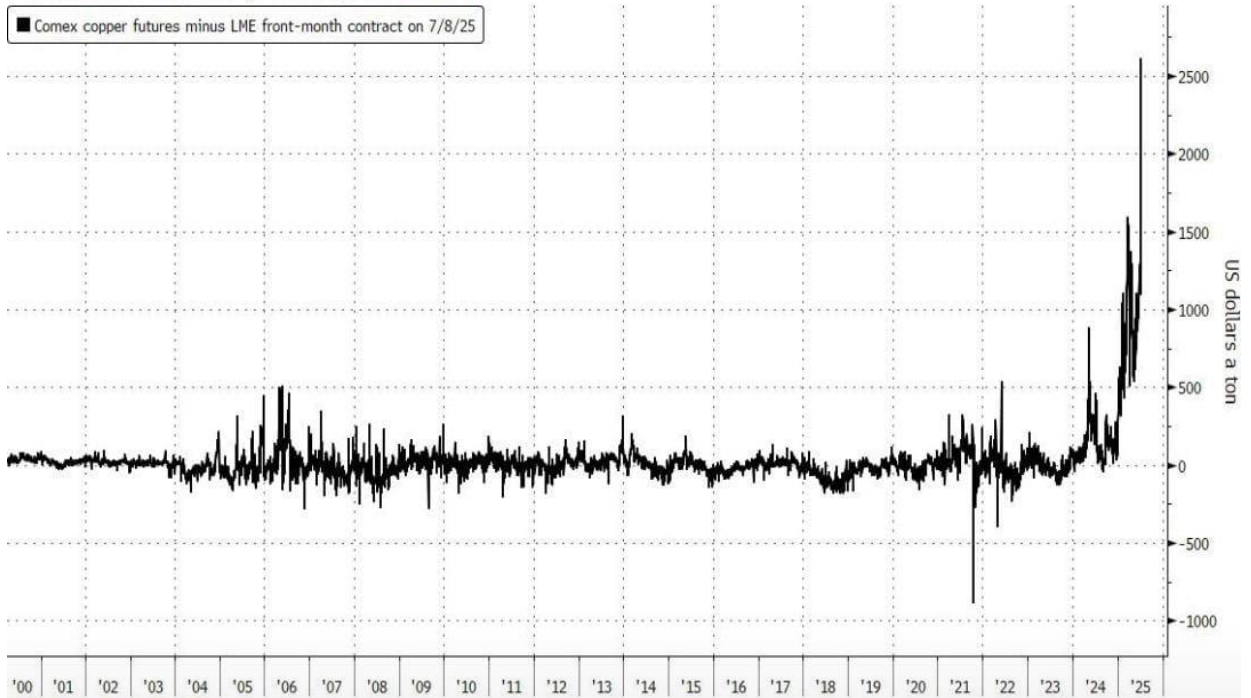
Chart With Interesting Observations

Comex Copper Trade At A Record Premium To Global Benchmark LME

- One of the most popular trades over the last few weeks has been the arbitrage between the COMEX and LME Copper, as a steep premium developed due to an 85%+ decline in LME inventory and soaring inventories in COMEX amid import tariff by the US.
- Traders were selling COMEX and buying LME futures, hoping for the spread to normalise as the supply crunch would end in the next few weeks. However, they were in complete shock when Trump announced 50% tariffs on Dr. Copper, which led to an explosion in the concerned spread.
- The COMEX-LME arbitrage (i.e. the price differential between metal contracts traded on the US based COMEX and UK based LME) jumped +138% day on day to nearly \$2600.
- The implication of higher copper prices in US can be seen in manufacturing industry.

Spread Between CME and LME Copper

Copper's New York-to-London Price Gap Goes Supersized
US futures trade at a record premium to global benchmark



Source: CME Group, LME

Source: Bloomberg, HSL Prime Research

F&O Highlights

SHORT BUILD UP WAS SEEN IN THE NIFTY & BANK NIFTY FUTURES

Create Longs on dips with the SL of 25400 Levels.

- Wednesday's session turned out to be a stark contrast to the Tuesday's closing surge. After remaining strong until 2:00 P.M., the Nifty fell sharply in the last hour of trade, signaling profit booking. Nifty finally settled the session with a loss of 46 points (0.18%), closing at 25,476.
- Short Build-Up was seen in the Nifty Futures where Open Interest rose by 3.22% with Nifty falling by 0.18%.
- Short Build-Up was seen in the Bank Nifty Futures where Open Interest rose by 1.45% with Bank Nifty falling by 0.07%.
- Nifty Open Interest Put Call ratio fell to 0.86 levels from 1.04 levels.
- Amongst the Nifty options (10-Jul Expiry), Call writing is seen at 25600-25700 levels, indicating Nifty is likely to find strong resistance in the vicinity of 25600-25700 levels. On the lower side, an immediate support is placed in the vicinity of 25400-25500 levels where we have seen Put writing.
- Short build-up was seen by FIIs in the Index Futures segment where they net sold worth 991 cr with their Open Interest going up by 3914 contracts.

Index	Expected Trend	Prev. Close	Buy/Sell	Stop Loss	Target
NIFTY FUT	UP	25558.80	BUY AROUND 25500	25400	25650
BANK NIFTY FUT	UP	57383.60	BUY AROUND 57250	57100	57600

Nifty50 Snapshot			
	09-Jul-25	08-Jul-25	% Chg.
Nifty Spot	25476.10	25522.50	-0.18
Nifty Futures	25558.80	25611.90	-0.21
Premium/ (Discount)	82.70	89.40	N.A.
Open Interest (OI)	1.73	1.68	3.22
Nifty PCR	0.86	1.04	-17.17

Bank Nifty Snapshot			
	09-Jul-25	08-Jul-25	% Chg.
Bank Nifty Spot	57213.55	57256.30	-0.07
Bank Nifty Futures	57383.60	57454.00	-0.12
Premium/ (Discount)	170.05	197.70	N.A.
Open Interest (OI)	0.24	0.24	1.45
Bank Nifty PCR	1.00	1.02	-2.53

Nifty Options Highest OI (Weekly)			
CALL		PUT	
Strike Price	Open Interest (Contracts)	Strike Price	Open Interest (Contracts)
26000	217362	25400	131287

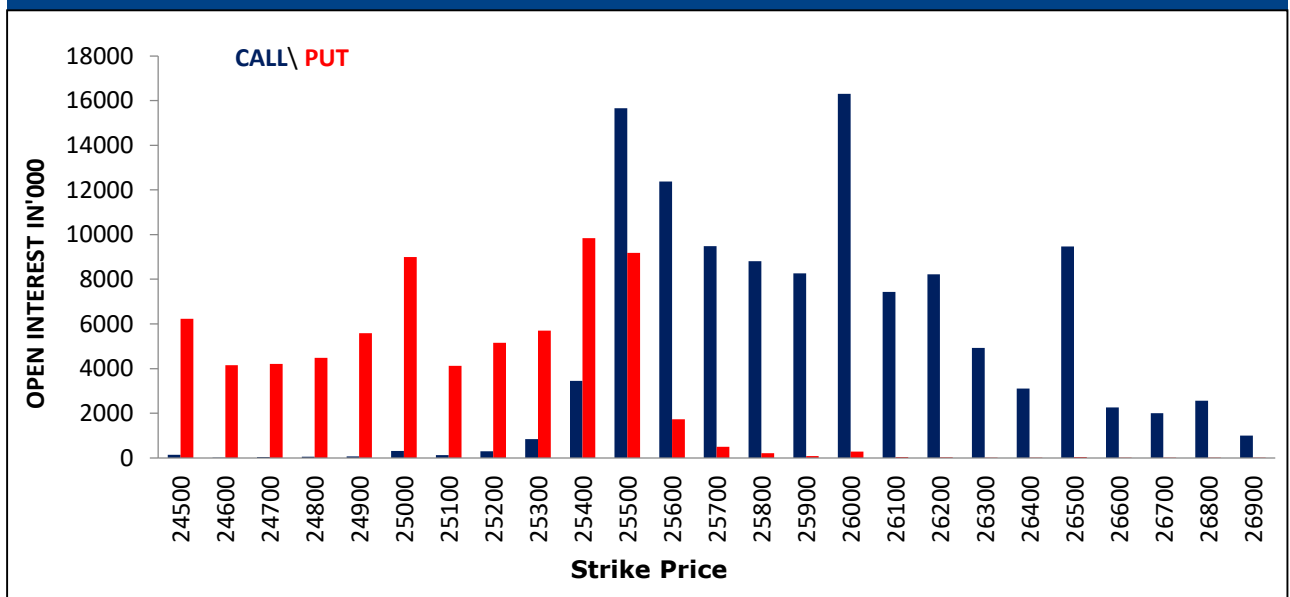
FII Activity On 09 July 2025

	BUY		SELL		NET	OPEN INTEREST	
	Contracts	Value (Rs Cr)	Contracts	Value (Rs Cr)	(Rs Cr)	Contracts	Value (Rs Cr)
Index Futures	9000	1746	14192	2737	-991	169769	32698
Nifty Futures	5604	1076	11570	2224	-1149	122362	23480
Bank Nifty Fut.	2589	520	1761	354	166	26806	5386
Index Options	5798277	1111789	5817324	1115075	-3287	1450771	278432
Nifty Options	5691231	1090711	5704043	1092802	-2091	1248999	238647
Bank Nifty Opt.	76959	15511	84556	16951	-1440	165029	33047
Stock Futures	240056	16858	251800	17416	-558	5530855	390963
Stock Options	304309	21961	280112	20463	1498	845179	59598

FII's Open Interest (Contracts)

Date	Index Futures	Nifty Futures	Bank nifty Futures	Index Options	Nifty Options	Bank Nifty Options	Stock Futures	Stock Options
09-Jul-25	169769	122362	26806	1450771	1248999	165029	5530855	845179
08-Jul-25	165855	119558	25852	1372520	1139223	197576	5515683	854162
Net Contracts	3914	2804	954	78251	109776	-32547	15172	-8983

Nifty Weekly (10 - July) Option Open Interest Distribution



Top Gainers OI Wise		
Company	Future OI (%)	Price (%)
KOTAKBANK	18	0
KFINTECH	13	3
HINDUNILVR	12	1
GMRAIRPORT	11	2
ABB	9	1

Top Losers OI Wise		
Company	Future OI (%)	Price (%)
DIVISLAB	-8	1
CROMPTON	-8	0
MARICO	-8	0
OBEROIRLTY	-6	-1
IIFL	-5	1

Top Gainers Price Wise		
Company	Future OI (%)	Price (%)
PHOENIXLTD	3	7
OBEROIRLTY	-1	5
RECLTD	1	4
MARICO	1	4
IGL	-5	3

Top Losers Price Wise		
Company	Future OI (%)	Price (%)
GLENMARK	4	-4
UNOMINDA	0	-4
MCX	4	-4
PIIND	-3	-4
WIPRO	5	-3

Long Buildup		
Company	Future OI (%)	Price (%)
KFINTECH	18	3
KAYNES	13	2
LAURUSLABS	8	2
PPLPHARMA	6	0
AMBER	4	2

Short Buildup		
Company	Future OI (%)	Price (%)
HINDCOPPER	12	-3
GAIL	11	-4
360ONE	9	-2
UNIONBANK	8	-4
HCLTECH	8	-2

Long Unwinding		
Company	Future OI (%)	Price (%)
IGL	-5	-3
MANAPPURAM	-2	-3
EXIDEIND	-2	0
MGL	-2	-2
POONAWALLA	-2	0

Short Covering		
Company	Future OI (%)	Price (%)
DELHIVERY	-8	3
CONCOR	-8	3
MANKIND	-8	4
NYKAA	-6	5
SBICARD	-5	2

Securities In Ban For Trade – 10.07.2025	
No.	Company Name
1.	HINDCOPPER
2.	RBLBANK

Economic Calendar

Thursday	Friday	Monday	Tuesday	Wednesday
10 July	11 July	14 July	15 July	16 July
Japan: PPI US: Initial & Conti. Claims	UK: GDP, IIP, Trade Balance	Japan: IIP India: Wholesale Price, CPI China: Trade Balance	China: New Home Price, GDP, Retail sales, IIP EU: IIP US: Empire Mfg., CPI India: Trade Balance	UK: CPI EU: Trade Balance US: MBA Mortgage, IIP, Capacity Utilisation, Mfg. Production

Open Derivatives Trading Calls

NO	RECO DT	RECO	COMPANY NAME	BUY RANGE	CMP	SL	TARGET	UPSIDE %	VALID TILL
1	8-JUL-25	BUY	BANK NIFTY JULY FUT	57380-57150	57,370.8	57,020.0	57800	0.7	11-JUL-25
2	8-JUL-25	BUY	NIFTY JULY FUT	25615-25540	25,550.0	25,515.0	25815	1.0	11-JUL-25
3	9-JUL-25	BUY	MIDCAP NIFTY 31ST JULY 13500 CALL OPTION	176.6	153.0	130	270	76.5	14-JUL-25
4	9-JUL-25	BUY	LTIM 31ST JULY 5300 PUT OPTION	153	151.5	115	210	38.6	14-JUL-25
5	24-JUN-25	BUY	SBI AUG FUT	803-816	817.2	795	900	10.1	28-AUG-25
6	27-JUN-25	BUY	ICICI BANK JULY FUT	1459.60-1430	1,438.7	1,402	1520	5.7	11-JUL-25
7	2-JUL-25	BUY	JSW STEEL JULY FUT	1061-1034	1,041.7	1,023	1115	7.0	16-JUL-25
8	3-JUL-25	BUY	ULTRATECH CEMENT JULY FUT	12510-12203	12,581	12,072	13160	4.6	17-JUL-25
9	9-JUL-25	BUY	JIO FINANCE JULY FUT	335.20-330	331.6	327.4	352	6.2	23-JUL-25

Open Short-Term MTF Calls

NO.	RECO DT.	RECO	COMPANY NAME	BUY RANGE	CMP	Lower Band	SL	TARGET	UPSIDE %	VALID TILL
1	20-JUN-25	BUY	M&M	3144.70-3174.70	3,176.3	3,084.7	3,033.7	3,309.7	4.2	11-JUL-25
2	1-JUL-25	BUY	CARBORUNDUM UNIVERSAL	992-978.45	997.8	949.0	931.0	1,048.0	5.0	15-JUL-25
3	1-JUL-25	BUY	MAHARASHTRA BANK	57.5-58.10	57.1	55.6	54.7	61.7	8.0	15-JUL-25
4	4-JUL-25	BUY	DEVYANI INTERNATIONAL	174-172	171.0	167.0	163.5	184.0	7.6	18-JUL-25
5	4-JUL-25	BUY	HONEYWELL AUTOMATION	40760-41200	40,510.0	39,860.0	39,100.0	42,900.0	5.9	18-JUL-25

Open Positional MTF Calls

NO.	RECO DT.	RECO	COMPANY NAME	BUY RANGE	CMP	SL	TARGET 1	TARGET 2	UPSIDE %	VALID TILL
1	26-MAY-25	BUY	CROMPTON GREAVES	355.35-339	342.8	333.0	380.0	391.0	14	10-JUL-25
2	26-MAY-25	BUY	CONSUMEETF	118.81-115.80	121.4	114.0	124.5	127.0	5	24-AUG-25
3	2-JUN-25	BUY	INDIAN BANK	633.30-612	638.8	594.0	680.0	705.0	10	17-JUL-25
4	4-JUN-25	BUY	MACROTECH DEVELOPERS	1446.50-1340	1,390.1	1300.0	1621.0	1680.0	21	3-AUG-25
5	9-JUN-25	BUY	JSW INFRA	310-287	312.3	279.0	335.0	350.0	12	24-JUL-25
6	9-JUN-25	BUY	AUTOIETF	24.45-23.79	24.5	23.5	25.1	25.7	5	7-SEP-25
7	10-JUN-25	BUY	ITBEES	41.90-42.10	42.0	40.2	44.0	46.0	9	8-SEP-25
8	11-JUN-25	BUY	VRL LOGISTICS	572-584	604.0	529.0	620.0	650.0	8	26-JUL-25
9	25-JUN-25	BUY	JUBILANT FOOD	716-708.50	683.0	665.0	765.0	815.0	19	9-AUG-25
10	26-JUN-25	BUY	PCBL	423-415.05	423.7	383.0	457.0	485.0	14	25-AUG-25

*= 1st Target Achieved

NSE 200 SUPPORT & RESISTANCE

SYMBOL	CLOSE	R2	R1	PIVOT	S1	S2	5 DMA	20 DMA	% Delivery	Trend
ABB	5898.0	6005.3	5951.7	5886.3	5832.7	5767.3	5863.1	5958.9	54.0	Bearish
ABCAPITAL	273.3	279.1	276.2	274.2	271.3	269.2	274.9	266.0	45.8	Bullish
ABFRL	78.9	80.9	79.9	79.1	78.0	77.2	78.3	75.5	38.4	Bullish
ACC	1990.6	2011.3	2000.9	1988.7	1978.3	1966.1	1971.3	1894.5	58.3	Bullish
AMBUJACEM	590.4	598.7	594.5	591.8	587.6	584.8	591.7	565.2	57.2	Bullish
ADANIPOWER	602.2	616.4	609.3	602.9	595.8	589.4	594.4	571.1	27.9	Bullish
ADANIENSOL	890.2	912.4	901.3	893.4	882.3	874.5	881.4	863.9	48.3	Bullish
ADANIGREEN	995.2	1017.6	1006.4	999.8	988.6	982.0	996.7	990.3	21.7	Bullish
ADANIENT	2583.0	2627.5	2605.3	2587.6	2565.4	2547.7	2592.1	2549.1	25.2	Bullish
ADANIPORTS	1443.0	1463.2	1453.1	1445.7	1435.6	1428.2	1436.5	1411.7	51.1	Bullish
ASHOKLEY	250.9	253.0	251.9	250.9	249.8	248.8	250.2	243.4	67.5	Bullish
ALKEM	4805.4	4861.7	4833.5	4810.8	4782.6	4759.9	4838.4	4838.1	48.5	Bearish
APLAPOLLO	1708.3	1770.4	1739.4	1718.4	1687.4	1666.4	1726.1	1775.7	72.4	Bearish
APOLLOHOSP	7469.0	7615.3	7542.2	7495.3	7422.2	7375.3	7553.7	7226.6	65.4	Bullish
ASIANPAINT	2498.9	2551.0	2525.0	2508.9	2482.9	2466.8	2456.3	2332.9	32.9	Bullish
APOLLOTYRE	473.9	481.3	477.6	472.9	469.2	464.4	465.6	453.0	48.1	Bullish
AUROPHARMA	1142.6	1176.7	1159.6	1147.5	1130.4	1118.3	1164.6	1133.1	35.2	Bullish
ASTRAL	1492.6	1520.8	1506.7	1491.9	1477.8	1463.0	1488.5	1513.0	61.0	Bearish
ATGL	650.9	664.7	657.8	653.9	647.0	643.1	657.0	652.1	33.4	Bearish
AUBANK	825.8	833.9	829.8	823.4	819.4	813.0	818.2	804.0	60.4	Bullish
AXISBANK	1164.7	1177.2	1170.9	1164.8	1158.5	1152.4	1170.8	1200.9	80.3	Bearish
BAJFINANCE	940.6	958.9	949.7	936.9	927.7	914.9	925.7	926.9	57.2	Bearish
BAJAJHFL	121.3	122.8	122.1	121.4	120.6	119.9	121.3	121.1	47.7	Bullish
BANDHANBNK	178.0	180.7	179.3	177.2	175.8	173.7	178.8	180.9	47.3	Bearish
BDL	1985.2	2016.4	2000.8	1982.4	1966.8	1948.4	1968.2	1915.5	35.7	Bullish
BHARTIARTL	2019.7	2061.8	2040.8	2019.6	1998.6	1977.4	2024.0	1957.0	69.1	Bullish
BHARTIHEXA	1785.9	1826.7	1806.3	1793.5	1773.1	1760.3	1850.0	1841.9	71.5	Bearish
BEL	417.7	426.9	422.3	419.4	414.8	411.9	422.1	412.8	67.3	Bullish
BHEL	262.1	269.3	265.7	261.7	258.1	254.2	258.9	257.7	42.7	Bullish
BHARATFORG	1261.5	1296.5	1279.0	1269.5	1252.0	1242.5	1292.4	1295.9	53.4	Bearish
BIOCON	373.6	384.3	378.9	374.0	368.6	363.6	373.9	358.7	40.9	Bullish
BAJAJ-AUTO	8361.0	8414.7	8387.8	8349.2	8322.3	8283.7	8395.9	8421.1	57.3	Bearish
BAJAJFINSV	2026.4	2050.9	2038.7	2025.3	2013.1	1999.7	2005.2	2013.3	61.8	Bearish
BAJAJHLDNG	13862.0	14116.0	13989.0	13845.0	13718.0	13574.0	14088.6	13962.1	42.4	Bearish
BANKBARODA	241.1	243.6	242.4	240.9	239.6	238.2	241.0	239.8	53.0	Bullish
BANKINDIA	115.9	118.1	117.0	116.3	115.2	114.5	117.4	118.0	45.0	Bearish
MAHABANK	57.1	58.1	57.6	57.0	56.5	55.9	57.2	55.4	41.2	Bullish
BOSCHLTD	35800.0	36550.0	36175.0	35720.0	35345.0	34890.0	35534.0	32953.5	23.3	Bullish
BPCL	348.5	359.5	354.0	350.8	345.3	342.1	346.5	327.3	66.0	Bullish
BRITANNIA	5882.0	5951.7	5916.8	5865.2	5830.3	5778.7	5834.2	5702.9	68.0	Bullish
BSE	2523.8	2584.3	2554.0	2519.8	2489.5	2455.3	2618.5	2703.1	19.3	Bearish
CANBK	114.0	115.0	114.5	113.9	113.4	112.9	114.1	111.7	58.8	Bullish
CONCOR	615.4	630.6	623.0	608.9	601.3	587.3	601.3	600.7	49.3	Bullish
CGPOWER	672.1	681.1	676.6	672.4	667.9	663.8	674.5	677.8	57.8	Bearish
CHOLAFIN	1563.1	1602.4	1582.7	1550.4	1530.7	1498.4	1530.6	1572.7	63.5	Bearish
CIPLA	1491.7	1508.8	1500.3	1493.1	1484.6	1477.4	1502.5	1502.3	62.9	Bearish
COLPAL	2438.6	2481.3	2459.9	2446.5	2425.1	2411.7	2449.4	2412.7	65.4	Bullish
COALINDIA	387.5	391.5	389.5	386.2	384.2	380.9	385.4	389.7	63.1	Bearish
COCHINSHIP	2036.3	2084.8	2060.6	2039.7	2015.5	1994.6	2036.4	2103.1	23.1	Bearish
COFORGE	1931.3	1975.4	1953.3	1938.0	1915.9	1900.6	1942.3	1877.6	53.7	Bullish

NSE 200 SUPPORT & RESISTANCE

SYMBOL	CLOSE	R2	R1	PIVOT	S1	S2	5 DMA	20 DMA	% Delivery	Trend
DABUR	522.2	531.3	526.7	518.9	514.3	506.4	506.9	483.3	52.0	Bullish
DIVISLAB	6983.5	7060.5	7022.0	6971.0	6932.5	6881.5	6918.5	6721.6	58.4	Bullish
DIXON	15710.0	16028.7	15869.3	15700.7	15541.3	15372.7	15378.4	14679.4	33.4	Bullish
DLF	829.7	851.7	840.7	833.5	822.4	815.2	834.2	844.1	57.7	Bearish
DMART	4190.9	4272.8	4231.9	4201.4	4160.5	4130.0	4250.0	4248.1	44.0	Bearish
DRREDDY	1269.4	1292.8	1281.1	1274.0	1262.3	1255.2	1292.5	1313.4	69.7	Bearish
EICHERMOT	5695.0	5743.3	5719.2	5694.3	5670.2	5645.3	5680.4	5563.9	59.8	Bullish
ESCORTS	3378.4	3411.6	3395.0	3381.3	3364.7	3351.0	3360.4	3289.3	45.5	Bullish
ETERNAL	264.6	267.6	266.1	263.9	262.4	260.3	261.8	257.0	59.7	Bullish
EXIDEIND	387.5	392.1	389.8	387.6	385.3	383.1	385.7	384.5	50.7	Bullish
FEDERALBNK	213.9	215.6	214.7	213.7	212.9	211.9	215.0	210.5	58.9	Bullish
GAIL	185.0	195.5	190.3	187.5	182.3	179.5	191.4	188.7	57.1	Bearish
GODREJCP	1293.8	1327.3	1310.5	1291.3	1274.5	1255.3	1240.7	1198.6	49.9	Bullish
GMRAIRPORT	92.8	95.3	94.0	92.7	91.5	90.2	90.5	85.2	41.4	Bullish
GLENMARK	1818.8	1855.1	1836.9	1814.8	1796.6	1774.5	1824.7	1725.6	59.9	Bullish
GODREJPROP	2255.1	2301.0	2278.0	2261.7	2238.7	2222.4	2286.9	2364.7	37.5	Bearish
GRASIM	2797.9	2843.6	2820.7	2807.2	2784.3	2770.8	2804.3	2772.7	64.0	Bullish
HAVELLS	1523.7	1551.0	1537.4	1524.2	1510.6	1497.4	1548.7	1550.3	55.4	Bearish
HCLTECH	1674.0	1729.7	1701.9	1686.4	1658.6	1643.1	1706.1	1713.7	57.4	Bearish
HDFCAMC	5141.0	5229.0	5185.0	5129.0	5085.0	5029.0	5065.5	5039.5	57.9	Bullish
HDFCBANK	2011.2	2023.4	2017.3	2007.7	2001.6	1992.0	1995.3	1973.1	70.0	Bullish
HDFCLIFE	786.3	803.4	794.8	789.4	780.9	775.5	788.2	782.9	69.7	Bullish
HEROMOTOCO	4333.1	4376.2	4354.7	4322.4	4300.9	4268.6	4319.2	4313.0	55.0	Bullish
HAL	5007.4	5093.3	5050.3	5022.1	4979.1	4950.9	4989.4	4950.6	41.2	Bullish
HINDALCO	674.0	704.6	689.3	676.7	661.4	648.8	688.8	672.0	56.8	Bullish
HINDPETRO	445.5	459.6	452.5	447.6	440.5	435.6	445.5	417.6	65.3	Bullish
HUDCO	230.0	233.7	231.8	230.2	228.4	226.8	229.8	231.2	32.8	Bearish
HINDUNILVR	2423.4	2462.7	2443.0	2420.1	2400.4	2377.5	2375.8	2319.3	58.1	Bullish
HYUNDAI	2091.0	2128.5	2109.8	2079.2	2060.5	2029.9	2080.7	2056.5	48.3	Bullish
HINDZINC	425.0	448.0	436.5	425.8	414.3	403.7	437.9	456.2	39.7	Bearish
ICICIBANK	1431.9	1444.5	1438.2	1432.4	1426.1	1420.3	1435.7	1429.9	78.5	Bullish
ICICIGI	2020.2	2052.7	2036.5	2022.7	2006.5	1992.7	2030.4	1992.0	69.8	Bullish
IDEA	7.3	7.5	7.4	7.3	7.2	7.1	7.3	7.0	19.9	Bullish
IDFCFIRSTB	77.5	78.4	77.9	77.5	77.1	76.7	77.7	73.4	65.4	Bullish
IGL	222.2	231.0	226.6	224.2	219.8	217.3	224.5	212.9	39.5	Bullish
INDHOTEL	750.2	763.7	756.9	747.1	740.4	730.6	744.5	756.2	68.9	Bearish
INDUSINDBK	840.8	860.4	850.6	845.1	835.2	829.7	852.8	843.7	47.5	Bearish
INDIANB	638.8	645.7	642.3	638.4	634.9	631.0	643.6	633.1	41.7	Bullish
INDIGO	5852.0	5908.7	5880.3	5835.7	5807.3	5762.7	5784.2	5620.2	87.3	Bullish
INDUSTOWER	405.2	412.4	408.8	406.4	402.8	400.4	414.1	406.4	70.1	Bearish
INFY	1633.7	1646.2	1639.9	1631.8	1625.5	1617.4	1631.8	1616.5	71.6	Bullish
NAUKRI	1447.1	1475.0	1461.1	1446.5	1432.6	1418.0	1453.7	1475.7	69.3	Bearish
IOC	150.3	155.0	152.6	151.4	149.0	147.7	151.5	145.1	53.8	Bullish
ICICIPRULI	680.4	697.3	688.8	674.9	666.4	652.5	660.4	645.0	50.9	Bullish
IRB	48.5	50.0	49.3	48.8	48.1	47.7	49.2	49.4	53.1	Bearish
IRCTC	786.1	804.0	795.0	789.6	780.6	775.2	783.1	771.9	40.7	Bullish
IREDA	165.9	168.9	167.4	165.8	164.3	162.6	166.7	167.5	36.7	Bearish
IRFC	137.6	139.8	138.7	137.9	136.8	136.1	138.7	138.5	33.8	Bearish
ITC	419.5	423.3	421.4	418.4	416.5	413.6	415.7	416.4	67.3	Bearish
JIOFIN	329.9	337.9	333.9	331.3	327.3	324.8	327.4	309.7	34.3	Bullish

NSE 200 SUPPORT & RESISTANCE

SYMBOL	CLOSE	R2	R1	PIVOT	S1	S2	5 DMA	20 DMA	% Delivery	Trend
JINDALSTEL	944.8	966.5	955.7	941.2	930.4	915.9	951.8	931.2	18.1	Bullish
JSWSTEEL	1040.4	1060.5	1050.5	1041.9	1031.9	1023.3	1043.1	1019.5	40.9	Bullish
JSWENERGY	514.9	529.7	522.3	518.1	510.7	506.5	512.1	510.2	43.1	Bullish
JUBLFOOD	683.0	695.8	689.4	685.6	679.1	675.3	694.5	694.8	55.3	Bearish
KALYANKJIL	578.8	602.0	590.4	580.9	569.3	559.9	581.0	545.7	25.5	Bullish
CUMMINSIND	3523.9	3595.4	3559.6	3519.3	3483.5	3443.2	3422.6	3341.8	65.4	Bullish
KOTAKBANK	2229.3	2245.9	2237.6	2225.8	2217.5	2205.7	2172.0	2167.6	68.3	Bullish
KPITTECH	1259.6	1282.9	1271.3	1264.1	1252.5	1245.3	1265.0	1316.9	38.2	Bearish
LICHSGFIN	604.2	610.6	607.4	604.3	601.1	598.1	607.5	605.3	53.6	Bearish
LICI	946.0	956.3	951.2	947.9	942.7	939.4	944.7	947.7	47.7	Bearish
LODHA	1390.1	1419.3	1404.7	1382.7	1368.1	1346.1	1375.9	1424.4	58.3	Bearish
LUPIN	1914.2	1987.5	1950.8	1928.9	1892.2	1870.3	1950.1	1954.3	50.7	Bearish
LT	3579.7	3621.2	3600.5	3584.3	3563.6	3547.4	3589.0	3617.6	62.7	Bearish
LTF	209.1	212.3	210.7	209.2	207.6	206.1	206.8	199.0	38.8	Bullish
LTIM	5329.5	5434.2	5381.8	5336.7	5284.3	5239.2	5337.8	5369.2	53.1	Bearish
MANKIND	2526.6	2621.9	2574.3	2495.9	2448.3	2369.9	2434.0	2359.1	44.8	Bullish
MFSL	1563.7	1582.6	1573.2	1563.4	1554.0	1544.2	1582.6	1597.0	69.5	Bearish
MAXHEALTH	1247.4	1320.2	1283.8	1264.4	1228.0	1208.6	1288.5	1246.2	69.4	Bullish
MAZADOCK	3294.3	3343.7	3319.0	3301.3	3276.6	3258.9	3295.8	3250.4	20.1	Bullish
M&M	3176.3	3216.8	3196.5	3168.8	3148.5	3120.8	3166.3	3132.6	61.0	Bullish
M&MFIN	270.3	272.9	271.6	270.5	269.2	268.0	268.2	267.8	57.0	Bullish
MOTILALOFS	925.1	953.6	939.3	926.7	912.4	899.8	924.4	862.1	29.1	Bullish
MOTHERSON	154.9	157.1	156.0	154.7	153.7	152.4	154.5	152.7	57.9	Bullish
MPHASIS	2863.9	2900.8	2882.3	2856.6	2838.1	2812.4	2891.0	2776.1	47.3	Bullish
MARICO	730.4	739.0	734.7	727.9	723.5	716.7	725.9	708.8	68.5	Bullish
MRF	150715.0	156771.7	153743.3	148871.7	145843.3	140971.7	145536.0	140598.0	46.3	Bullish
MARUTI	12470.0	12590.0	12530.0	12480.0	12420.0	12370.0	12560.4	12598.4	64.2	Bearish
MUTHOOTFIN	2645.6	2681.1	2663.3	2644.2	2626.4	2607.3	2650.8	2617.6	67.8	Bullish
NATIONALUM	186.2	192.6	189.4	187.3	184.2	182.1	189.8	188.6	40.0	Bearish
NESTLEIND	2427.8	2448.3	2438.0	2426.3	2416.0	2404.3	2409.8	2393.3	69.2	Bullish
NHPC	88.3	89.3	88.8	88.3	87.8	87.3	86.1	85.2	50.4	Bullish
NMDC	67.9	69.1	68.5	67.8	67.2	66.5	68.5	69.0	39.7	Bearish
NTPC	344.0	346.9	345.5	344.1	342.7	341.3	339.0	334.9	73.9	Bullish
NTPCGREEN	107.4	108.1	107.7	107.3	106.9	106.4	106.9	107.0	67.3	Bearish
NYKAA	213.4	223.1	218.2	210.1	205.2	197.0	203.6	201.7	46.1	Bullish
OBEROIRLTY	1831.1	1876.8	1853.9	1839.5	1816.6	1802.2	1854.7	1906.3	64.9	Bearish
OFSS	8938.5	9078.8	9008.7	8959.3	8889.2	8839.8	9017.8	9210.7	47.1	Bearish
OIL	445.4	450.8	448.1	444.8	442.1	438.9	445.6	453.8	48.6	Bearish
OLAELEC	40.4	41.7	41.1	40.6	39.9	39.4	41.0	43.6	41.5	Bearish
ONGC	243.4	245.7	244.5	243.4	242.2	241.1	243.5	246.7	63.6	Bearish
PAGEIND	48590.0	49523.3	49056.7	48698.3	48231.7	47873.3	48664.0	47269.8	46.5	Bullish
PATANJALI	1660.6	1689.3	1675.0	1652.5	1638.2	1615.7	1656.4	1649.9	39.5	Bullish
PAYTM	907.7	919.8	913.8	907.9	901.8	895.9	919.1	902.0	35.1	Bullish
PRESTIGE	1650.0	1680.3	1665.2	1648.0	1632.9	1615.7	1630.7	1669.4	38.4	Bearish
PHOENIXLTD	1518.7	1589.4	1554.1	1529.5	1494.2	1469.6	1539.5	1578.0	42.7	Bearish
PIIND	4168.4	4229.5	4198.9	4162.5	4131.9	4095.5	4187.5	4138.2	61.5	Bullish
PIDILITIND	3048.3	3104.7	3076.5	3052.7	3024.5	3000.7	3076.6	3028.0	64.4	Bullish
PETRONET	305.6	310.4	308.0	305.9	303.5	301.4	303.8	300.1	68.1	Bullish
PNB	111.0	113.4	112.2	111.5	110.3	109.6	111.3	108.0	50.4	Bullish
POLICYBZR	1854.5	1879.3	1866.9	1852.0	1839.6	1824.7	1827.3	1858.0	53.0	Bearish

NSE 200 SUPPORT & RESISTANCE

SYMBOL	CLOSE	R2	R1	PIVOT	S1	S2	5 DMA	20 DMA	% Delivery	Trend
POLYCAB	6716.0	6853.3	6784.7	6727.3	6658.7	6601.3	6737.9	6387.1	56.6	Bullish
PFC	417.8	424.8	421.3	418.3	414.8	411.8	415.6	412.7	49.9	Bullish
PREMIERENE	1074.1	1114.3	1094.2	1073.9	1053.8	1033.5	1056.8	1033.8	30.2	Bullish
PERSISTENT	5724.0	5838.7	5781.3	5746.2	5688.8	5653.7	5839.0	5977.4	41.9	Bearish
POWERGRID	299.7	302.3	301.0	298.7	297.4	295.1	296.2	292.6	63.3	Bullish
RECLTD	391.6	397.7	394.6	392.8	389.7	387.8	393.0	397.2	61.2	Bearish
RELIANCE	1519.0	1567.6	1543.3	1526.7	1502.4	1485.8	1528.6	1482.2	59.5	Bullish
RVNL	385.1	395.2	390.2	387.1	382.1	379.0	388.6	395.7	25.7	Bearish
SAIL	133.9	137.4	135.7	133.3	131.6	129.2	134.7	131.1	38.6	Bullish
SBICARD	934.5	949.5	942.0	931.0	923.5	912.6	916.6	956.1	36.4	Bearish
SBILIFE	1814.9	1833.6	1824.3	1811.6	1802.3	1789.6	1810.0	1817.0	65.4	Bearish
SBIN	811.0	814.3	812.6	810.8	809.2	807.4	809.9	802.4	56.4	Bullish
SHRIRAMFIN	681.1	690.4	685.7	678.4	673.7	666.4	674.6	676.3	49.8	Bearish
SUPREMEIND	4194.7	4242.2	4218.5	4201.2	4177.5	4160.2	4238.2	4385.1	58.4	Bearish
SIEMENS	3218.3	3334.8	3276.5	3244.8	3186.5	3154.8	3279.5	3248.9	46.4	Bearish
SJVN	98.3	101.0	99.6	98.8	97.5	96.7	98.6	98.6	31.4	Bearish
SOLARINDS	16502.0	16803.3	16652.7	16554.3	16403.7	16305.3	16681.6	16984.3	65.9	Bearish
SONACOMS	455.6	471.1	463.4	455.3	447.6	439.5	468.6	480.6	64.3	Bearish
SHREECEM	31615.0	32005.0	31810.0	31480.0	31285.0	30955.0	31351.0	30205.3	61.6	Bullish
SRF	3280.5	3312.0	3296.2	3279.2	3263.4	3246.4	3253.8	3148.0	66.7	Bullish
SUZLON	65.9	67.3	66.6	66.2	65.5	65.0	65.8	65.1	42.4	Bullish
SUNPHARMA	1669.4	1699.5	1684.5	1665.7	1650.7	1631.9	1675.6	1671.0	68.4	Bearish
SWIGGY	380.2	387.6	383.9	379.2	375.5	370.8	381.6	381.6	41.8	Bearish
TATASTEEL	159.0	163.9	161.5	159.5	157.0	155.0	162.5	157.5	45.0	Bullish
TATACONSUM	1097.9	1114.8	1106.3	1099.0	1090.5	1083.2	1095.8	1097.7	59.0	Bearish
TATATECH	704.0	712.4	708.2	704.3	700.1	696.3	704.5	716.1	36.4	Bearish
TATACOMM	1761.2	1787.2	1774.2	1758.8	1745.8	1730.4	1766.7	1710.0	56.9	Bullish
TCS	3383.8	3435.3	3409.5	3388.3	3362.5	3341.3	3404.5	3432.6	62.7	Bearish
TECHM	1614.8	1645.5	1630.1	1621.1	1605.7	1596.7	1640.2	1673.6	53.3	Bearish
TATAELXSI	6152.0	6227.0	6189.5	6150.0	6112.5	6073.0	6184.5	6287.0	35.4	Bearish
TIINDIA	2895.3	3019.1	2957.2	2918.1	2856.2	2817.1	2940.3	2952.1	57.9	Bearish
TORNTPOWER	1427.0	1447.3	1437.1	1422.2	1412.0	1397.1	1434.8	1430.8	57.6	Bearish
TATAPOWER	400.7	408.6	404.6	401.6	397.6	394.6	400.7	399.7	45.9	Bullish
TRENT	5408.0	5542.0	5475.0	5437.5	5370.5	5333.0	5598.8	5844.3	51.8	Bearish
TORNTPHARM	3353.7	3392.8	3373.3	3340.4	3320.9	3288.0	3346.1	3282.1	74.7	Bullish
TITAN	3432.1	3479.0	3455.5	3438.1	3414.6	3397.2	3581.0	3563.0	66.4	Bearish
TATAMOTORS	692.8	699.3	696.0	692.3	689.0	685.3	690.9	685.6	46.5	Bullish
TVSMOTOR	2840.1	2865.4	2852.7	2831.4	2818.7	2797.4	2865.4	2843.0	58.1	Bearish
UNIONBANK	144.6	151.0	147.8	144.7	141.5	138.4	150.3	148.0	25.6	Bearish
UNITDSPR	1370.9	1382.6	1376.7	1369.7	1363.8	1356.8	1375.6	1428.7	72.0	Bearish
UPL	664.8	678.9	671.8	667.8	660.7	656.7	676.8	653.1	51.2	Bullish
ULTRACEMCO	12562.0	12710.0	12636.0	12506.0	12432.0	12302.0	12451.2	11881.5	74.1	Bullish
VBL	465.8	472.5	469.1	466.1	462.7	459.7	459.0	461.5	51.7	Bearish
VEDL	440.8	481.8	461.3	441.0	420.4	400.1	453.7	455.3	32.6	Bearish
VMM	131.3	133.7	132.5	131.1	129.9	128.5	129.5	129.4	48.7	Bullish
VOLTAS	1366.9	1391.6	1379.2	1370.1	1357.7	1348.6	1367.0	1318.2	59.2	Bullish
WAAREEENER	3119.5	3221.3	3170.4	3108.2	3057.3	2995.1	3015.2	2934.1	22.2	Bullish
WIPRO	267.8	271.9	269.9	267.4	265.3	262.8	268.5	265.5	47.0	Bullish
YESBANK	19.9	20.2	20.1	20.0	19.8	19.7	20.0	20.1	45.0	Bearish
ZYDUSLIFE	978.5	989.8	984.1	977.1	971.4	964.3	992.2	977.8	54.4	Bullish

Disclosure & Disclaimer :

HDFC Securities Limited (HSL) is a SEBI Registered Research Analyst having registration no. INH000002475.

This report has been prepared by HDFC Securities Ltd and is solely for information of the recipient only. The report must not be used as a singular basis of any investment decision. The views herein are of a general nature and do not consider the risk appetite or the particular circumstances of an individual investor; readers are requested to take professional advice before investing. "This report may have been refined using AI tools to enhance clarity and readability."

Nothing in this document should be construed as investment advice. Each recipient of this document should make such investigations as they deem necessary to arrive at an independent evaluation of an investment in securities of the companies referred to in this document (including merits and risks) and should consult their own advisors to determine merits and risks of such investment. The information and opinions contained herein have been compiled or arrived at, based upon information obtained in good faith from sources believed to be reliable. Such information has not been independently verified and no guaranty, representation of warranty, express or implied, is made as to its accuracy, completeness or correctness. All such information and opinions are subject to change without notice. Descriptions of any company or companies or their securities mentioned herein are not intended to be complete. HSL is not obliged to update this report for such changes. HSL has the right to make changes and modifications at any time.

This report is not directed to, or intended for display, downloading, printing, reproducing or for distribution to or use by, any person or entity who is a citizen or resident or located in any locality, state, country or other jurisdiction where such distribution, publication, reproduction, availability or use would be contrary to law or regulation or what would subject HSL or its affiliates to any registration or licensing requirement within such jurisdiction.

If this report is inadvertently sent or has reached any person in such country, especially, United States of America, the same should be ignored and brought to the attention of the sender. This document may not be reproduced, distributed or published in whole or in part, directly or indirectly, for any purposes or in any manner.

Foreign currencies denominated securities, wherever mentioned, are subject to exchange rate fluctuations, which could have an adverse effect on their value or price, or the income derived from them. In addition, investors in securities such as ADRs, the values of which are influenced by foreign currencies effectively assume currency risk. It should not be considered to be taken as an offer to

sell or a solicitation to buy any security.

This document is not, and should not, be construed as an offer or solicitation of an offer, to buy or sell any securities or other financial instruments. This report should not be construed as an invitation or solicitation to do business with HSL. HSL may from time to time solicit from, or perform broking, or other services for, any company mentioned in this mail and/or its attachments.

HSL and its affiliated company(ies), their directors and employees may; (a) from time to time, have a long or short position in, and buy or sell the securities of the company(ies) mentioned herein or (b) be engaged in any other transaction involving such securities and earn brokerage or other compensation or act as a market maker in the financial instruments of the company(ies) discussed herein or act as an advisor or lender/borrower to such company(ies) or may have any other potential conflict of interests with respect to any recommendation and other related information and opinions.

HSL, its directors, analysts or employees do not take any responsibility, financial or otherwise, of the losses or the damages sustained due to the investments made or any action taken on basis of this report, including but not restricted to, fluctuation in the prices of shares and bonds, changes in the currency rates, diminution in the NAVs, reduction in the dividend or income, etc.

HSL and other group companies, its directors, associates, employees may have various positions in any of the stocks, securities and financial instruments dealt in the report, or may make sell or purchase or other deals in these securities from time to time or may deal in other securities of the companies / organizations described in this report. As regards the associates of HSL please refer the website.

HSL or its associates might have managed or co-managed public offering of securities for the subject company or might have been mandated by the subject company for any other assignment in the past twelve months.

Please note that HDFC Securities has a proprietary trading desk. This desk maintains an arm's length distance with the Research team and all its activities are segregated from Research activities. The proprietary desk operates independently, potentially leading to investment decisions that may deviate from research views.

HSL or its associates might have received any compensation from the companies mentioned in the report during the period preceding twelve months from the date of this report for services in respect of managing or co-managing public offerings, corporate finance, investment banking or merchant banking, brokerage services or other advisory service in a merger or specific transaction in the normal course of business.

HSL or its analysts did not receive any compensation or other benefits from the companies mentioned in the report or third party in connection with preparation of the research report. Accordingly, neither HSL nor Research Analysts have any material conflict of interest at the time of publication of this report. Compensation of our Research Analysts is not based on any specific merchant banking, investment banking or brokerage service transactions. HSL may have issued other reports that are inconsistent with and reach different conclusion from the information presented in this report.

Research entity has not been engaged in market making activity for the subject company. Research analyst has not served as an officer, director or employee of the subject company. We have not received any compensation/benefits from the subject company or third party in connection with the Research Report.

HDFC securities Limited, I Think Techno Campus, Building - B, "Alpha", Office Floor 8, Near Kanjurmarg Station, Opp. Crompton Greaves, Kanjurmarg (East), Mumbai 400 042 Phone: (022) 3075 3400 Fax: (022) 2496 5066

Compliance Officer: Murli V Karkera Email: complianceofficer@hdfcsec.com Phone: (022) 3045 3600

For grievance redressal contact Customer Care Team Email: customercare@hdfcsec.com Phone: (022) 3901 9400

HDFC Securities Limited, SEBI Reg. No.: NSE, BSE, MSEI, MCX: INZ000186937; AMFI Reg. No. ARN: 13549; PFRDA Reg. No. POP: 11092018; IRDA Corporate Agent License No.: CA0062; SEBI Research Analyst Reg. No.: INH000002475; SEBI Investment Adviser Reg. No.: INA000011538; CIN - U67120MH2000PLC152193

Investment in securities market are subject to market risks. Read all the related documents carefully before investing.

Mutual Funds Investments are subject to market risk. Please read the offer and scheme related documents carefully before investing.

Registration granted by SEBI, membership of BASL (in case of IAs) and certification from NISM in no way guarantee performance of the intermediary or provide any assurance of returns to investors.